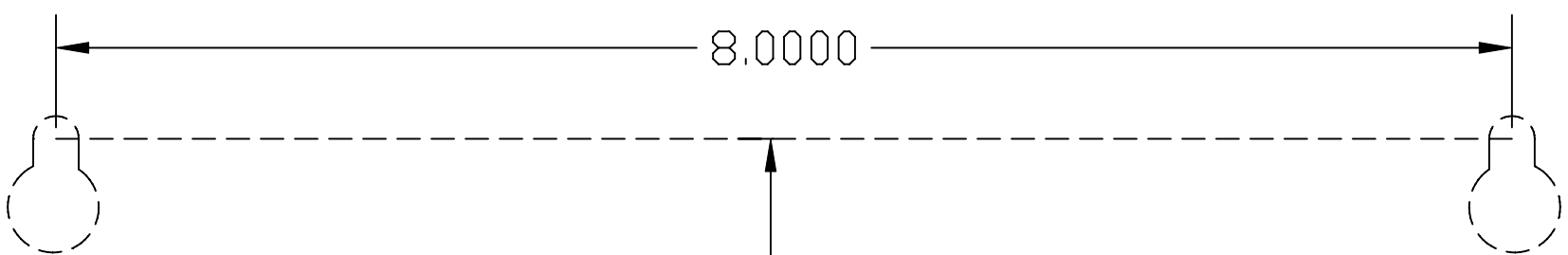


ULTIMO ET-16U, ET-24U, ET-36U AND ET-46U MOUNTING TEMPLATE



MOUNTING INSTRUCTIONS

1. INSTALL TWO SCREWS INTO THE WALL AT EYE LEVEL. USE THE PLASTIC ANCHORS IF THE WALL IS DRYWALL OR MASONRY. LET THE SCREW HEAD EXTEND 1/4 INCH FROM THE WALL.
2. HANG CONTROLLER ON THE UPPER MOUNTING SCREWS.
3. INSTALL THE LOWER SCREW TO SECURE THE ENCLOSURE TO THE WALL.

8.0000